

Connection and Collaboration



2013 ANNUAL REPORT

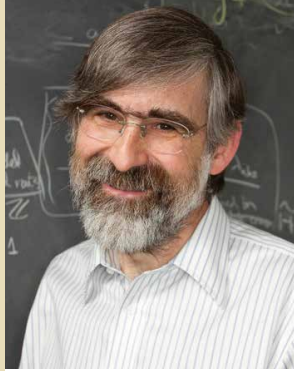


Photo by Bryce Vickmark

David A. Vogan, Jr.
Massachusetts Institute of Technology
AMS President, 2013–2014

Dear Colleagues,

Being president of the American Mathematical Society is a remarkable experience. From the staff in Providence, Ann Arbor, and Washington, to the dedicated volunteers who participate in AMS governance and in editing its books and journals, to the people I encounter at the Society's international, national, and sectional meetings, I have seen a true community working constantly for mathematics and for mathematicians.

These pages will give you a chance to experience for yourself the Society's efforts in the past year and to get a sense of the volunteers and staff behind these efforts. Whether it's the annual Joint Mathematics Meetings—which have been held for over a century—or our new Student Chapters—which began just last year—the AMS is in the business of helping mathematicians in all aspects and phases of their careers.

In this report you'll see the results of people connecting in various ways, for the Society is also about building and supporting connections. This is only fitting, because mathematics itself is often about making connections: about understanding that two apparently unrelated things may make the most sense when they are seen together.

The AMS Bylaws impose on the president a single requirement: to give a retiring presidential address. Early next year my successor, Robert Bryant of Duke University, the former director of the Mathematical Sciences Research Institute, will assume the presidency, so that I can devote full attention to preparing such an address. It has been a pleasure to begin working with Robert this year; I have the highest confidence in his ability to lead the AMS.

I invite you to read further and learn about our accomplishments that took place in the past year; better yet, to see where you can participate in the year to come!

Sincerely,

David A. Vogan, Jr.
AMS President, 2013-2014



The American Mathematical Society was founded in 1888 to further the interests of mathematics research and scholarship, and serves the national and international community through its meetings, publications, advocacy, and other programs.

The Society's offices in Providence, Ann Arbor, and Washington, DC employ 204 people. There are nearly 30,000 individual members and 580 institutions worldwide that benefit from membership in the Society.

TABLE OF CONTENTS

From the President inside cover

Introduction page 1

Report of the AMS page 2

Financial Review..... page 6

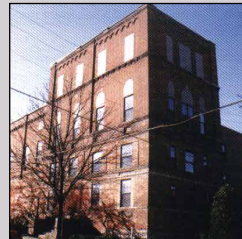
AMS Prizes and Awards..... page 10

Contributions..... page 11



American Mathematical Society
Headquarters
201 Charles Street
Providence, RI 02904-2294 USA

Tel.: 401-455-4000
Fax: 401-331-3842
Email: ams@ams.org



Mathematical Reviews
416 Fourth Street
Ann Arbor, MI 48103-4820 USA

Tel.: 734-996-5250
Fax: 734-996-2916
Email: mathrev@ams.org



American Mathematical Society
Government Relations
1527 Eighteenth Street, N.W.
Washington, DC 20036-1358 USA

Tel.: 202-588-1100
Fax: 202-588-1853
Email: amsdc@ams.org



Maintaining Excellence in Mathematical Sciences Research

Advancing the Mathematics Profession

Supporting Mathematics Education at All Levels

Fostering Awareness and Appreciation of Mathematics



Photo by John Abramowski, Brown University

Donald E. McClure
AMS Executive Director

Throughout 2013 the AMS celebrated its 125th anniversary, starting with a Gala at the Joint Mathematics Meetings in San Diego and culminating in an Open House at AMS headquarters in November. We continue celebrating the connections and collaborations that are integral to the mission of the Society and to our work as mathematicians.

The AMS remains flexible, robust, financially healthy, and very active in serving the mathematics community, thanks to the efforts of our members, volunteers and staff.



Facts & Figures

- 450 mathematicians are volunteer leaders and committee members
- 15,000+ volunteers review publications for Math Reviews
- 200 staff members in RI, DC and MI provide day-to-day membership, program and publishing services
- 11 mathematicians at various stages of their careers volunteer to write for the Feature Column and AMS Blogs
- 18 mathematicians serve as Editor and Associate Editors of *Notices of the AMS*
- 4 Associate Secretaries organize the scientific program for 8 AMS Sectional meetings each year
- The nearly 30,000 AMS members worldwide are actively involved in the Society in some way

Current Issues

The Society continues to address major issues affecting the mathematics community. Prominent issues in 2013 included education policy, steps taken by the mathematics community to advance mathematics education in the early college years, the public perception of mathematics, government support of basic research in science and mathematics, public access to the research outputs from government-sponsored research, the shifting landscape for the business of scholarly publishing, and the rapid growth of online education.

In July, the President's Council of Advisors on Science and Technology (PCAST) invited Mark Green, Chair of the AMS Board of Trustees, and Eric Friedlander, Immediate Past President, to deliver presentations to a public meeting of PCAST at the National Academy of Sciences. Mark and Eric described initiatives of members of the mathematics community to improve the experience of students from mathematics-intensive disciplines in the math courses they must master in the early college years. The presentations were very well received. Mark and Eric are both among a group of six leaders of an initiative known as TPSE Math—Transforming Post-Secondary Education in Mathematics.

At the Joint Mathematics Meetings in Baltimore, the Committee on Education and Committee on Science Policy organized a panel on The Public Face of Mathematics. The goal of the panel was to help inform the audience of strategies for members of the mathematics community to become more successful at getting their communications such as op-ed articles about mathematics published in mass media. Members of the panel included U.S. Congressman Jerry McNerney (California, 9th District), Steven Strogatz (mathematician, author, and frequent contributor to the *New York Times*), and Keith Devlin (the Math Guy on NPR's *Weekend Edition*).

Members of the AMS also became more active in communication with members of the U.S. Congress. We expect this to be an ongoing activity coordinated by the Society's Washington Office. It is an important activity because of the increased politicization of topics which should be immune from interference by politicians. Foremost among these topics was an attempt by the House of Representatives to eliminate some disciplines from research support by the National Science Foundation and to impose onerous requirements on the time-honored peer review process of NSF. As a major part of its annual meeting in Washington, the Committee on Science Policy has included visits by its members to offices of their senators and representatives to advocate for the strong support of science.



Open access continues to be a major issue for scholarly publishing. Briefly, the debate about open access publishing is concerned with different approaches to making research articles freely available to everyone. The AMS started discussions in September 2012 about a proposal for establishing two new open access journals. The discussions culminated in April 2013, when the Council approved an experiment to launch *Proceedings of the American Mathematical Society, Series B*, and *Transactions of the American Mathematical Society, Series B*, to begin publication in 2014. A benefit for the entire mathematics community is that the AMS is able to publish more of the expanding research literature at no cost to libraries or readers.

Publications

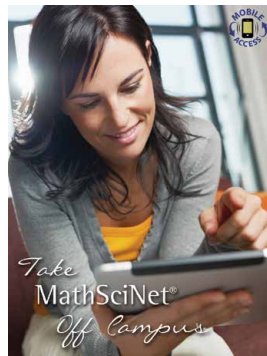


The AMS appointed Robert M. Harington as Associate Executive Director, Publishing, in 2013. He is driving strategic growth and management of the AMS publishing program for books, journals and electronic products.

New in 2013 was the introduction of two new gold open access research journals, *Proceedings of the AMS, Series B*, and *Transactions of the AMS, Series B*. These journals serve as separate and distinct companions to the subscription journals *Proceedings of the AMS* and *Transactions of the AMS*. Each of the new journals is electronic-only and freely available online. In order to assure the high editorial standard of each new journal, they share common editorial boards and submission procedures with their companion journals.

“The way to tackle stability and even growth for the future health of an academic society is to diversify its offerings to the community.... Are there examples of societies that are saying to themselves, ‘let’s invest in publishing innovation to help us fulfill our mission more effectively?’”

– Robert Harington



Other notable advances in 2013 include enhanced references for journals (author’s bibliography is combined with data from MathSciNet to provide more complete and standardized bibliographic information and links to journal and author pages); Mobile pairing (users can “pair” their various web browsing devices—smartphones, tablets, laptops, desktops—with an institution’s network to access its subscription to MathSciNet and other AMS electronic products);

Altmetric (a tool allowing authors, researchers, readers, librarians, and publishers to track and measure online attention of selected scholarly works); and new eBook products.

“Users can “pair” their various web browsing devices—smartphones, tablets, laptops, desktops—with an institution’s network to access its subscription to MathSciNet and other AMS electronic products.” – Robert Harington

AMS, one of the founders of the MathJax Consortium, became managing partner of the MathJax Consortium in 2013. In this role the AMS handles the administrative affairs of the MathJax project, which develops a state-of-the-art, open source, JavaScript platform for display of mathematics.

Meetings & Conferences



Photo by Sandy Huffaker

AMS meetings are thriving. The 2013 Joint Mathematics Meetings (JMM) in San Diego drew more than 6,100 mathematicians, including many students, who contributed to seventy nine special sessions. JMM 2014 drew nearly 6,500. Eight Sectional Meetings were held in 2013 with a total attendance of 3,100.



Three new AMS blogs were launched in 2013 as a way to connect with mathematicians, students and the general public.

Blog on Math Blogs - Brie Finegold (Rincon Research) and Evelyn Lamb (University of Utah)

e-Mentoring Network in the Mathematical Sciences - Ricardo Cortez (Tulane University) and Dagan Karp (Harvey Mudd College)

Visual Insight - John Baez (U.C. Riverside and the Centre for Quantum Technologies in Singapore)

Individuals from around the world follow and share on AMS.org, AMS Blogs, Facebook, Twitter, Google+ and YouTube.



Karen Saxe, 2013-14 AMS-AAAS Congressional Fellow, took a position in the office of Senator Al Franken (D-MN).



Anna Haensch, 2013 AMS-AAAS Mass Media Fellow, spent 10 weeks working at National Public Radio and contributed to the JMM 2014 Blog.



Xinwen Zhu, Northwestern University, 2013-14 AMS Centennial Fellow, is using his award to pursue his research and collaborations at Columbia University and UC Berkeley.



The Mathematics Research Communities (MRC) Program, supported by an NSF grant, builds social and collaborative networks to inspire and sustain mathematicians just beginning their research. It is now in its seventh year and has provided a remarkable opportunity for 650 early-career mathematicians.



"I feel very lucky to have had the opportunity as a young researcher to participate in this MRC program. It is a great way to network, think about new research problems not entirely connected to your dissertation topic, and spend a week in a beautiful setting with people who are passionate about math." – MRC participant

AMS Student Chapters

The AMS Student Chapters program was launched to serve the interests and needs of graduate students in the mathematical sciences. The pilot program introduced in 2012 grew to 24 chapters as of the end of 2013. The program is open to all graduate departments and



provides direct support to help groups of students become engaged in mathematical research.

“The Chapters promote connections and I encourage students and their faculty alike to engage with each other.” – Donald McClure

Travel Grants

Three-hundred graduate students traveled to the JMM and AMS sectional meetings in 2013 thanks to an anonymous donor, and 120 early-career mathematicians collaborated in all parts of the world with help from AMS-Simons Foundation travel grants.

Philanthropic Support

D. Andrew Beal increased to US\$1 million the fund for the prize for the solution to the Beal Conjecture, a number theory problem. The fund is being held by the AMS until it is awarded, and the spendable income from investment of the prize money is used to fund the annual Erdős Memorial Lecture and other activities of the Society that benefit early-career mathematicians.

Kenneth I. and Mary Lou Gross created an endowed fund in honor of their daughters Laura and Karen that supports the Award for Impact on the Teaching and Learning of Mathematics, established by the AMS Committee on Education in 2013. The Award will be given annually to a mathematician (or group of mathematicians) who has made significant contributions of lasting value to mathematics education.

The AMS lost a very special friend, Paul J. Sally, Jr., on December 30, 2013. He was a University of Chicago mathematician best known for his tireless commitment to improving mathematics education, and was very active in the AMS, serving for example on the Board of Trustees, the Committee on Science Policy, and the Council. An endowment created by Sally provides part of the funding for the Arnold Ross Lectures that the AMS sponsors each year. He was honored to learn shortly before his passing that he was to be the first recipient of the AMS Award for Impact on the Teaching and Learning of Mathematics.

The generosity of an anonymous donor continues to support travel grants for graduate students at JMM, AMS sectional meetings, and the Mathematical Art Exhibition awards. Monetary prizes and travel expenses for contestants in the national Who Wants to Be a Mathematician game are supported by another philanthropist who also wishes to remain anonymous.

The AMS thanks *all* who donate to the AMS in any amount; the generosity of many helps support a range of

programs and services that enable the Society to fulfill its mission: maintaining excellence in mathematical sciences research, advancing the mathematics profession, supporting education at all levels, and fostering awareness and appreciation of mathematics.

Moving Forward

AMS Activity Groups and Community Forums underway now provide a focused forum for members interested in exploring a targeted area of mathematics. Members of the communities are using electronic communications to exchange information and current research trends, which support collaborations, mentoring and working relationships among AMS members in research subareas. Any member may propose a new Activity Group, and by doing so, agrees to serve as Moderator.



Photo by Becky Kirkland

Carla Savage, North Carolina State University, began her service as Secretary of the AMS in 2013, succeeding Robert J. Daverman. She is organizing and coordinating the Council and its committees; serving as ex officio member of the Council, the Executive Committee, the Agenda and Budget Committee, the Liaison Committee, the Long Range Planning Committee, the Committee on Meetings and Conferences, the Committee on the Profession, and the Committee on Publications; and overseeing, together with the Associate Secretaries, the scientific program of all Society meetings.

“The Society provides an infrastructure that helps mathematicians do their jobs: high-quality journals and books, conferences to present results and exchange ideas, Math Reviews and MathSciNet, early-career programs, awards and prizes, advocacy for the profession. We all benefit in some way.” – Carla Savage

The Society continues to move forward in enhancing and developing programs to enable connections and collaborations among mathematicians at all levels. We invite the community to participate and provide feedback on the Arnold Ross Lectures and Who Wants to Be a Mathematician games for high school students; Find a Graduate Program and Feature Column for undergraduate students; AMS Graduate Student Chapters and travel grants for graduate students; MathJobs, Mathematics Research Communities and blogs for early-career mathematicians; *Notices of the AMS*, Washington DC Office Congressional Visits and other advocacy activities, publications, and many other programs and services for all.

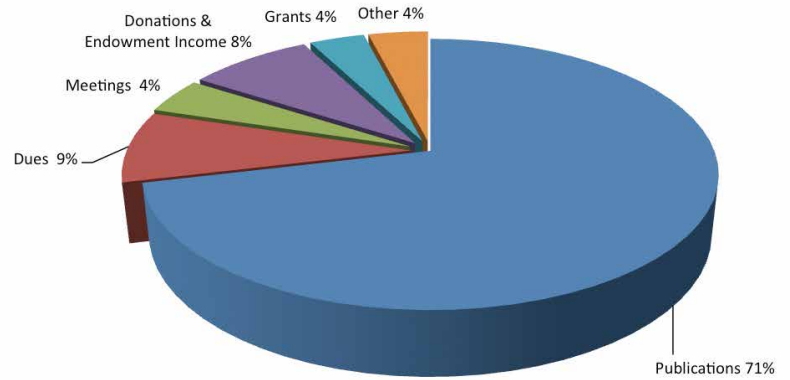


2013 Financial Review

The American Mathematical Society experienced a gain of \$1.2 million in net operating income in 2013. With these operating results, the Society has experienced a positive net income for 23 years. In addition, the Society's unrestricted net assets increased by \$17.8 million, primarily due to a 22.5% return on the long-term investments.

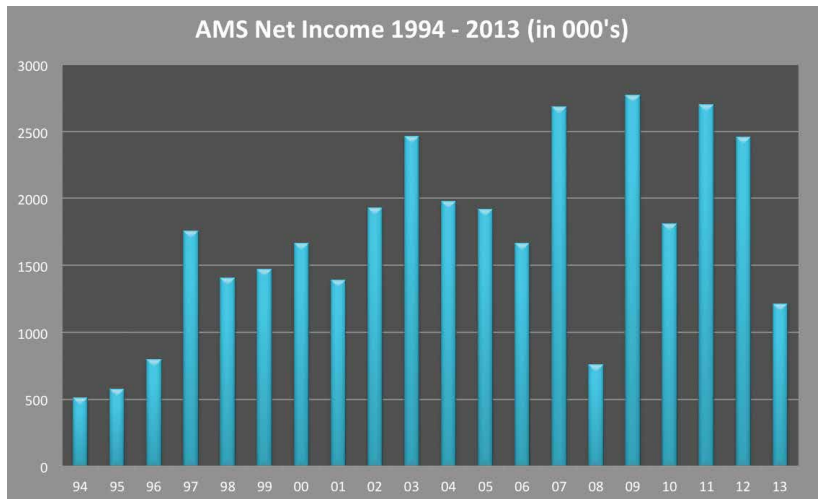
The Society experienced a decrease in publishing revenues of approximately \$440,000 between 2012 and 2013, because of a 25% decline in the number of books published. In addition, the Society ended the publication of the printed version of the Mathematical Reviews database, which decreased subscription sales by 5%. Although revenues declined in 2013, growth is expected in future years due to new sources of revenues, such as electronic publishing products. The following chart shows the sources of revenues from the Society's operations:

2013 Operating Revenues of \$28,307,913



Expenses increased between 2012 and 2013 by about \$800,000 or 3%. Contracted services expense, travel costs, and equipment costs were the major contributors to the increase in expenses. Personnel costs rose by only 1% due to a reduction in force in the second half of 2012. The Society

AMS Net Income 1994 - 2013 (in 000's)





has maintained good cost controls for many years, ensuring a stable net operating income for more than two decades.

The following are the Society's 2013 Balance Sheets, Statement of Activities, and a listing of the Society's endowment and other funds:

AMERICAN MATHEMATICAL SOCIETY

Balance Sheets

December 31,

2013

2012

Assets

Cash and short term investments	\$ 16,108,273	\$ 15,869,582
Accounts receivables, inventory, prepaid expenses	3,729,701	4,640,527
Land, buildings and equipment, net	5,127,278	5,367,801
Long-term investments	115,196,217	93,748,205
Total assets	\$ 140,161,469	\$ 119,626,115

Liabilities and Net Assets

Liabilities:

Accounts payable and accrued expenses	\$ 4,691,504	\$ 4,063,690
Deferred revenue	11,671,731	12,376,468
Postretirement benefit obligation	6,108,330	6,656,993
Total liabilities	22,471,565	23,097,151

Net assets:

Unrestricted:

Undesignated	1,448,012	2,261,743
Designated	101,007,256	82,388,405
	<u>102,455,268</u>	<u>84,650,148</u>
Temporarily restricted	9,968,645	6,782,825
Permanently restricted	5,265,991	5,095,991
Total net assets	117,689,904	96,528,964

Total liabilities and net assets	\$ 140,161,469	\$ 119,626,115
---	-----------------------	-----------------------



AMERICAN MATHEMATICAL SOCIETY
Statements of Activities

	<i>Years Ended December 31,</i>	
	2013	2012
Changes in unrestricted net assets:		
Operating revenue, including net assets released from restrictions:		
Mathematical Reviews	\$ 10,868,077	\$ 11,087,637
Journals	5,062,348	4,829,242
Books	3,623,632	4,023,584
Dues, services, and outreach	3,839,958	3,696,895
Investment returns appropriated for spending	1,459,970	1,772,400
Other publications-related revenue	636,881	419,591
Grants, prizes and awards	1,233,313	1,171,264
Meetings	1,253,181	1,229,138
Short-term investment income	262,762	460,062
Other	67,791	54,202
	<hr/>	<hr/>
Total operating revenue	28,307,913	28,744,015
	<hr/>	<hr/>
Operating expenses:		
Mathematical Reviews	7,075,759	7,055,203
Journals	1,415,180	1,426,643
Books	3,220,413	3,421,212
Publications indirect	1,168,463	1,138,659
Customer services, warehousing and distribution	1,567,644	1,227,921
Other publications-related expense	194,186	204,347
Membership, services and outreach	4,016,715	3,727,374
Grants, prizes and awards	1,504,294	1,329,423
Meetings	1,254,622	1,130,959
Governance	553,239	472,553
Member and professional services indirect	740,306	704,489
General and administrative	4,317,500	4,364,657
Other	66,021	83,619
	<hr/>	<hr/>
Total operating expenses	27,094,342	26,287,059
	<hr/>	<hr/>
Excess of operating revenue over operating expenses	1,213,571	2,456,956
	<hr/>	<hr/>
Other changes in unrestricted net assets, including investment return	16,591,549	9,436,009
	<hr/>	<hr/>
Change in unrestricted net assets	17,805,120	11,892,965
	<hr/>	<hr/>
Change in temporarily restricted net assets	3,185,820	1,029,540
	<hr/>	<hr/>
Change in permanently restricted net assets	170,000	111,477
	<hr/>	<hr/>
Change in net assets	21,160,940	13,033,982
	<hr/>	<hr/>
Net assets, beginning of year	96,528,964	83,494,982
	<hr/>	<hr/>
Net assets, end of year	\$ 117,689,904	\$ 96,528,964
	<hr/>	<hr/>



Endowment Funds and the Beal Prize

12/31/2013

Income Restricted Endowment:	Original Gift	
Research Prize Funds	at 12/31/2013	Total Value
Steele	145,511	731,899
Birkhoff	50,132	91,886
Veblen	58,599	81,317
Wiener	29,773	48,728
Bocher	32,557	49,502
Conant	9,477	48,778
Cole Number Theory	33,563	50,989
Cole Algebra	33,563	50,989
Satter	49,720	80,258
Doob Prize	45,000	60,303
Robbins Prize	41,250	56,117
Eisenbud Prize	40,000	52,556
Other Prize and Award Funds		
Morgan	25,000	53,082
Albert Whiteman	93,618	126,892
Arnold Ross Lectures	70,000	94,483
Trjitzinsky	196,030	588,060
C.V. Newsom	100,000	273,651
Centennial	61,183	145,968
Menger	97,250	132,953
Ky Fan (China)	366,757	470,061
Impact on Teaching & Learning	21,510	26,754
Epsilon	1,873,067	2,496,505
Einstein Lecture	100,000	136,080
Exemplary Program	100,000	135,247
Mathematical Art	20,000	27,050
Total (Income Restricted)	3,693,560	6,110,110
Income Unrestricted Endowment:		
Endowment	107,530	906,675
Morita	100,000	161,620
Henderson	548,223	4,819,435
Schoenfeld/Mitchell	573,447	913,743
Laha	189,309	306,983
Ritt	51,347	287,135
Moore	2,575	27,066
Total (Income Unrestricted)	1,572,431	7,422,657
Total Endowment Funds	5,265,992	13,532,767
Quasi-Endowment Funds:		
Journal Archive Fund		1,414,581
Young Scholars		812,252
Economic Stabilization Fund (ESF)		25,840,754
Endowment Income Stabilization Fund (EISF)		497,710
Backfile Digitization Fund		270,519
Operations Support Fund (OSF)		72,171,440
Total Quasi-Endowment Funds		101,007,256
Beal Prize (Temporarily Restricted)		1,153,924
Total All Funds		115,693,947



The following prizes and awards were given at the 2014 Joint Mathematics Meetings.



Photo credit: Cliff Moore

Leroy P. Steele Prize for Lifetime Achievement: Phillip A. Griffiths

for his deep and wide-ranging contributions to mathematics and the mathematics profession.



Leonard Eisenbud Prize for Mathematics and Physics: Gregory W. Moore

for his group of works on the structure of four-dimensional supersymmetric theories with extended supersymmetry.



Photo credit: Becky Rische

Leroy P. Steele Prize for Seminal Contribution to Research: Luis A. Caffarelli, Robert Kohn and Louis Nirenberg

for their paper, "Partial regularity of suitable weak solutions of the Navier-Stokes equations." (*Communications Pure and Applied Math*, vol. 35, no. 6, 771-831 (1982)), a source of inspiration for a generation of mathematicians.



Photo credit: Lisa Nugent, University of New Hampshire Photographic Services

Frank Nelson Cole Prize in Number Theory: Yitang Zhang

for his paper "Bounded gaps between primes" (*Annals of Mathematics*, volume 179, no. 3 (2014)).



Photo credit: Photothèque CNRS - Sébastien Godefroy

Joseph L. Doob Prize: Cédric Villani

for his book *Optimal Transport: Old and New* (Springer-Verlag, 2009).



Painting by Dmitri Burago

Leroy P. Steele Prize for Mathematical Exposition: Dmitri Y. Burago, Yuri D. Burago and Sergei V. Ivanov

for their book, *A Course in Metric Geometry*, in recognition of excellence in exposition and promotion of fruitful ideas in geometry.



Photo credit: Margarete Eisele

Böcher Memorial Prize: Simon Brendle

for his outstanding solutions of long-standing problems in geometric analysis.

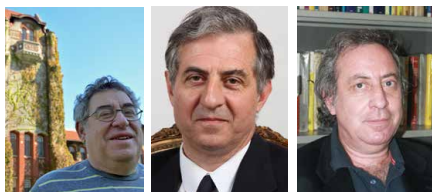


Photo credit: Ryoko Goldston

Photo credit: László Székelyi

Frank Nelson Cole Prize in Number Theory: Daniel Goldston, János Pintz, and Cem Y. Yıldırım

for their work on "small gaps" between prime numbers, which is presented in their paper "Primes in tuples. I" (*Annals of Mathematics* (2) 170 (2009), no. 2, 819-862)).



Photo credit: Thomas Jorgensen, University of Iowa

Award for Distinguished Public Service: Philip Kutzko

for his leadership of a national effort to increase the number of doctoral degrees in the mathematical sciences earned by students from underrepresented groups.



Photo credit: Cathryn Farnsworth

JPBM Communications Award: Danica McKellar

for her books, blog, and public appearances which have encouraged countless middle and high school students, especially girls, to be more interested in mathematics.



Levi L. Conant Prize: Alexander Kontorovich

for his article "From Apollonius to Zaremba: Local-global phenomena in thin orbits," (*Bulletin of the AMS*, 50 (2013), no. 2, 187-228).



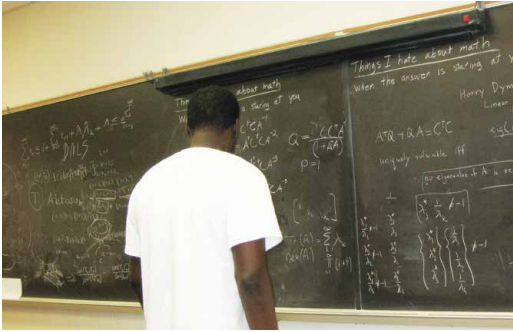
AMS-MAA-SIAM Frank and Brennie Morgan Prize for Outstanding Research in Mathematics by an Undergraduate Student: Eric Larson

for his truly exceptional record of research.



Award for an Exemplary Program or Achievement in a Mathematics Department - 2013

Mathematics Department at the University of Texas at Arlington



for making a concerted and highly successful effort over the last decade to build a doctoral program whose composition reflects the demographics of our increasingly diverse nation. (Photo courtesy of UT Arlington Mathematics Department.)

Mathematics Programs That Make a Difference Award - 2013

The Nebraska Conference for Undergraduate Women in Mathematics (NCUWM)



for its remarkable contribution to the national effort to produce more women PhDs in the mathematical sciences. (Photo courtesy of NCUWM.)

AMS Epsilon Fund 2013 Awards



AMS chose 15 summer math programs to receive Epsilon grants in 2013.

"We learned about error correcting, codes, fractals, graph theory, cryptology, spherical geometry, infinity, etc. I had a blast, and I was surprised at how fun and awesome math can be."

—Student at an Epsilon-funded camp

Dear Friends and Colleagues,

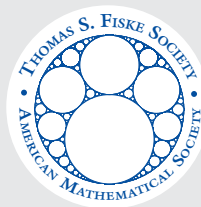
The American Mathematical Society works in many ways to foster a vibrant environment for mathematicians. Programs and services that directly improve scholarship and professional life have substantial impact.

You, our members and friends, make this work possible through your generosity. The Society celebrated its 125th Anniversary in 2013, and in concordance, many of you directed your philanthropic resources toward the AMS. Your donations promoted excellence in research via the Centennial Fellowship and other prizes and awards; they ensured that young mathematicians participated in camps that fed their eagerness for mathematics; they supported graduate students as they took crucial steps early in their careers and they enabled access to MathSciNet across the globe, assisting mathematicians in developing countries. On behalf of all these beneficiaries and those working to support these programs, I thank you.

The Society's work was lifted by substantial individual gifts this year. D. Andrew Beal increased the prize related to the Beal Conjecture to \$1 million dollars; the spendable income funds the Paul Erdős Memorial Lecture and other key AMS programs. The Epsilon Fund was aided by Adrian Banner with royalties from his book sales, as well as by Thomas Savage. Aurellia Sobczyk made a gift in memory of her husband, Andrew. Cathleen Synge Morawetz and Herbert Morawetz bolstered the Oswald Veblen Prize in Geometry. The AMS received a legacy gift from the late mathematician Kathleen Baxter. The Society also recognizes Robert and Maria Steinberg's longtime support of the AMS, and we acknowledge with sadness their recent passing.

Every donor builds connections between legacies of scholars and mathematical thought. By giving, you are indelibly connected to the field, its history, its future and to members of the mathematical community everywhere. Passion for mathematics drives us to do great things. Thank you for your gifts that make so much possible.

Donald E. McClure
Executive Director



Thomas S. Fiske Society

Members of the Thomas S. Fiske Society uphold the future of mathematics by including the American Mathematical Society in their estate plans. The following Fiske Society members have created a personal legacy in support of the mathematical sciences by naming the AMS in their will, retirement plan, or other gift planning vehicle.

Anonymous (3)
Walter O. Augenstein
Kathleen Baxter
Shirley and
Gerald Bergum
Shirley Cashwell
Peter L. Duren
Carl Faith

Isidore Fleischer
Ramesh A. Gangolli
Rosalind J. Guaraldo
Yanguang Charles Li
Joseph S. Mamelak
Trevor J. McMin
Cathleen S. Morawetz
Albert Nijenhuis

Franklin P. Peterson
Moshe Rosenfeld
Margaret W. Taft
B. A. and M. Lynn
Taylor
Yury Volin
Eugene Toll
Steven H. Weintraub



Tribute Gifts

The following friends, colleagues and family members are all being specially honored by a donation in support of mathematics. These gifts are a tangible homage to those who have passed on, or a way to honor people still living. The AMS is pleased to list the commemorated individuals and the 2013 tribute donors who made these gifts possible.

Gifts were made in memory of the following individuals:

Maurice Auslander *by Bernice L. Auslander*
 Salah Baouendi *by Linda Preiss Rothschild*
 W. J. Blok *by Don L. Pigozzi*
 Former AMS Production Staff *by Victoria Ancona*
 Arthur Greenspoon *by Chris Abrams*
 Arthur Greenspoon *by Graeme Fairweather*
 Arthur Greenspoon *by Donald E. McClure*
 Arthur Greenspoon *by Jihye Sofia Seo*
 Arthur Greenspoon *by Irina F. Sivergina*
 Arthur Greenspoon *by B. A. and M. Lynn Taylor*
 Robert T. Kocembo Sr. *by Robert T. Kocembo Jr. and Wendy E. Zielinski*
 Nelson Mandela *by Maleafisha Stephen Joseph Tladi*
 Edwin and Martha Marek *by Robin Marek and David Beutel*
 Vincent O. McBrien *by Joseph W. Paciorek*
 Eugene Pflumm *by Mollie Pflumm*
 Marjorie Place Cummings *by Ellen H. Heiser*
 Arnold Ross *by Charles W. Misner*
 Paul Sally Jr. *by Jeffrey D. Adler*
 Harold N. Shapiro *by Alexandra Shlapentokh*

Jeremy Frank Shapiro *by Francisco J. Jauffred*
 Andrew Sobczyk *by Aurellia Sobczyk*
 Kathryn B. Toll *by Eugene Toll*

Gifts were made in honor of the following individuals:

Mike Breen, Annette Emerson and the AMS Public Awareness Office
by Stephen and Susan Wildstrom
 Morton E. Harris *by George Glauberman*
 Vivian Healey and Wade Hindes *by Daniel L. Goroff*
 James W. Maxwell *by Adalaide Morris*
 Donald E. McClure *by Anonymous*
 Peter Ori *by Mark Lares*
 Marcie Rathke *by Nathaniel Eldredge*
 Carla D. Savage *by Robert T. Kocembo Jr. and Wendy E. Zielinski*

Donors to the AMS

The people and businesses listed below made one or more gifts to the AMS between January 1–December 31, 2013. On behalf of all those who benefit from this generosity, the AMS extends its thanks to everyone who chose to support mathematics and the AMS during the past year. Donors who have contributed \$1,000 or more in one year are further acknowledged on the AMS Donor Wall of Honor at the Society's Headquarters. We are pleased to recognize each donor in the following listing.

PRESIDENT'S ASSOCIATES

(Gifts of \$5,000 and above)

Anonymous (2)
 Anonymous Fund of
 the Toledo Community
 Foundation
 Tom M. Apostol
 Adrian D. Banner
 Kathleen Baxter
 D. Andrew Beal
 Elwyn and Jennifer
 Berlekamp Fund
 William Craig
 Edward D. Davis
 Elsevier
 Mark L. and
 Kathryn Kert Green
 Sigurdur Helgason
 Phyllis and Donald Kahn
 Philanthropic Fund
 Harry Lucas Jr.
 Cathleen Syngé and
 Herbert Morawetz
 Savage Charitable
 Fund of the Community
 Foundation of Broward
 Aurellia Sobczyk

Robert and
 Maria W. Steinberg
 Eugene Toll
 Klaus Tschira
 Foundation

ASSOCIATES

(Gifts of \$1,000 to \$4,999)

Anonymous (3)
 2013 AMS Staff
 Walter O. Augenstein
 Edward D. Baker
 Foundation
 Joan and Joseph Birman
 Foundation
 Robert L. Bryant and
 Reymundo A. Garcia
 Roger Chalkley
 John B. Conway
 Robert J. Daverman
 Jean E. de Valpine
 Peter Der
 Loki der Quaeler
 John H. Ewing
 Ronald and
 Fan Chung Graham

Elizabeth Grossman and
 Joshua Boorstein
 Carl E. Harrell
 William R. Hearst III
 John M. Hosack
 William H. Jaco
 Richard V. Kadison
 James E. Keisler
 Greg Kuperberg and
 Rena J. Zieve
 Nosup Kwak
 George F. Leger
 Albert and
 Dorothy Marden
 David B. Massey
 Math for America
 James W. Maxwell
 Donald E. McClure
 M. Susan Montgomery
 Jacques Neveu
 Walter V. Petryshyn
 Samuel Murray Rankin III
 Peter J. Riemer
 Andrew M. and
 Kathryn S. Rockett
 Charitable Gift Fund
 Abdulalim A. Shabazz

Norton and Irene Starr
 Ronald J. and
 Sharon M. Stern
 Karen Vogtmann and
 John Smillie
 Stephen and
 Susan Wildstrom
 Scott A. Wolpert

SPONSORS

(Gifts of \$500 to \$999)

Anonymous (3)
 Otto B. Bekken
 Manuel P. Berriozabal
 Henrik Bresinsky
 Jerald S. and
 Arielle Brodkey
 Karl E. Byleen
 Concordia C. Chen
 Lenore J. Cowen and
 William Bogstad
 Michael R. Douglas
 Loyal Durand
 Richard L. Gantos
 Frank D. Grosshans
 Audrey Cole Hand
 Maria Margaret Klawe

R. Royce Kneee, Jr.
 Robert V. Kohn
 Gary J. Kurowski
 Cecil E. Leith
 Harold Levine
 George Lusztig
 Robin Marek and
 David Beutel
 Microsoft
 M. Frank Norman
 Tadao Oda
 Emily Riley and
 Theodore Simon
 Linda Preiss Rothschild
 Marie D. Rutenbergs
 Richard M. Schoen
 Norman E. Sexauer
 Keith Paul Smith
 Joel H. Spencer
 Murray Marvin Stokely III
 Evelyn K. Wantland
 Steven H. Weintraub
 Jay A. Wood
 Tsu C. Wu

PATRONS

(Gifts of \$100 to \$499)

Anonymous (60)
Brian Abrahamson
Chris Abrams
Jeffrey D. Adler
Roy L. Adler
Stephanie B. Alexander
Bernard C. Anderson
Frank W. Anderson
Stuart S. Antman
Richard F. Arenstorf
Martin A. Arkowitz
Manfred K. Armbrust
Richard A. Askey
William R. Ballard
Theodore J. Barth
Steven R. Bell
Georgia Benkart
Alan E. Berger
Christopher Bernhardt
David S. Berry
George Berzsenyi
Richard L. Bishop
David E. Blair
Steven E. Blasberg
Leonard John Borucki
Aldridge K. Bousfield
John S. Bradley
Louis R. Bragg
Michael A. Breen
David M. Bressoud
Edgar H. Brown Jr
Lawrence G. Brown
Richard K. Brown
James E. Burke
Charles Allen Butler
Robert Lawrence Byrom
Rotraut G. Cahill
James R. Case
Alfred S. Cavaretta Jr
Robert G. Cawley
Nathaniel Chafee
Pak Soong Chee
Herman Chernoff
Richard C. Churchill
Stuart Citrin
Wil Clarke
Daniel I. A. Cohen

Paul Dana Cole
Frank F. Connor
Arthur H. Copeland Jr
Douglas L. Costa
Carl C. Cowen
Walter Craig and
Deirdre Haskell
Annalisa Crannell
Everett C. Dade
John P. Dalbec
James N. Damon
Guy M. De Primo
Dominick J. DelCasale
Michael E. Detlefsen
Charles R. Diminnie
Heinz Deitrich Doebner
James S. Donaldson
Peter L. Duren
John W. Duskin Jr
Clifford J. Earle
David Albert Edwards
Sylvan H. Eisman
Elmer Eisner
Jessie Ann Engle
Mats Engwall
Leonard Evens
Barbara T. Faires
Graeme Fairweather
Paul Feit
Giovanni Felder
Arnold D. Feldman
John C. Fenley
Newman H. Fisher
Uri Fixman
Gerald B. Folland
Paul Fong
William Fulton
Joseph M. Gani
Charles Ray Garner Jr
John B. Garnett
Maurice Eugene Gilmore
Samuel Gitler
James G. Glimm
Richard P. Goblirsch
Samuel Goldberg
J. K. Goldhaber
Martin Golubitsky
Jack E. Graver
William L. Green
Phillip A. Griffiths

Karlheinz U.
Groechenig
Seymour Haber
George F. Haddix
Ruth M. Halperin
Richard M. Hain
Heini Halberstam
David R. Hale
David Harbater
Evans M. Harrell II
Garry D. Hart
Bill Hassinger Jr
Adam O'Neill
Hausknecht
Jane M. Hawkins and
Michael E. Taylor
Ellen H. Heiser
James P. Henniger
Diane L. Herrmann and
Andy Carter
Gerald A. Heuer
Gloria C. Hewitt
Nancy Hingston
John J. Hirschfelder
Jonathan P. E. Hodgson
Hartmut Hoft
Samuel S. Holland Jr
Henry C. Howard
Tiao-Tiao Hsu
James G. Huard
Robert Hubata
Joseph A. Hughes
George W. Hukle
Thomas W. Hungerford
Joan P. Hutchinson
Arnold J. Insel
I. Martin Isaacs
Hans Joergen Jensen
Robert R. Jensen
Charles H. Jepsen
Xiaomei Ji
Eugene C. Johnson
David Copeland Johnson
William B. Jones
Troels Jorgensen
Valentina and
Seva Joukhovitski
Tadeusz Jozefiak
Thomas Kailath
Agnes M. Kalemari
Herbert M. Kamowitz
Herbert E. Kasube
Sheldon H. Katz
Robert P. Kertz
Barbara Lee Keyfitz
Allan M. Kirch
James M. and
Jane E. Kister
Julia F. Knight
George H. Knightly
Ronald J. Knill
Kurt Siegfried Kolbig
Antoni A. Kosinski
Ralph M. Krause
Hsu-Tung Ku
Jeanne LaDuke
Jean Pierre Lafon
Kee Y. Lam
Carl E. Langenhop
Michel L. Lapidus
Gregory F. Lawler
J. Larry Lehman



Support of the AMS is support to the community of mathematics: mathematics research, education, and public awareness. Mathematics has been good to us and, through the AMS, we can give back to our community.

—William A. Jaco,
AMS Chairman of the Board

Gerald M. Leibowitz
Joan R. Leitzel
Manoel Jose M. S. Lemos
H. W. Lenstra
Edward L. Lever
Paul Levy
D. J. Lewis
George M. Lewis
William James Lewis
Zvie Liberman
Sally Irene Lipsey
Robert J. Lipshutz
Friedrich Littmann
Jonathan D. Lubin
Albert T. Lundell
Russell D. Lyons
John E. Mack
James Joseph Madden
Adolf G. Mader
Konstantin Makarychev
J. J. Malone
Joseph S. Mamelak
Joseph F. Manogue
Margaret O. Marchand
Greg Marks
Wallace S. Martindale III
Attila Mate
H. F. Mattson Jr
Arthur P. Mattuck
Stephen B. Maurer
John C. Mayer
Raymond A. Mayer Jr
Byron Leon McAllister
Thomas L. McCoy
O. Carruth McGehee
T. G. McLaughlin
Brockway McMillan
George F. Meierhofer
Morris J. Meisner
John Joseph Michels
Richard A. Moore
Frank Morgan
Yasuhiro Morita
Larry J. Morley
Adelaide Morris
Joseph R. Morris
Robert A. Morris
Kent E. Morrison
Manmath Nayak
Eric A. Nordgren
Louis Lawrence Odette
Andrew M. Odlyzko
Andrew P. Ogg
Robert F. Olin

Takashi Ono
Oracle Corporation
Shari and
Donald Ornstein
Arlene O'Sean
James M. Osterburg
Joseph W. Paciorek
Walter R. Parry
Henry J. Passerini
Donald S. Passman
Charles M. Patton
Marek J. Patyra
Herbert A. Perkins
Alexander Perlin
William G. Pertusi
John W. Petro
Pfizer Foundation
Mollie Pflumm
Don L. Pigozzi
Aleksy Popelyukhin
Martin E. Price
Paul H. Rabinowitz
Eric Todd Quinto and
Judith Anne Larsen
James V. Ralston
Kulumani M.
Rangaswamy
Salvatore Rao
David E. Reese
Michael Reid
Bruce Reznick
Barbara Snyder Rice
John H. Rickert
Eleanor G. Rieffel
Marc A. Rieffel
Alain M. Robert
Geoffrey R. Robinson
Vijay K. Rohatgi
Robert A. Rosenbaum
Jonathan M. Rosenberg
Sharon Cutler Ross
RSA 2013
Daniel Ruberman
Herman Rubin
David Ryeburn
Jeffrey R. Sachs
Habib Salehi
Scott A. Sallberg
Donald E. Sarason
Chelluri C. A. Sastri
Carla D. Savage
Murray M. Schacher
Samuel Schechter
Markus Schmidmeier

Thank you for believing in me. I couldn't have had this experience without your support.

—Graduate student,
AMS Travel Grant recipient



AMS Travel Grant recipients at the Joint Mathematics Meetings



Bertram M. Schreiber
 Mark Schroder
 John Schue
 Seymour Schuster
 Robert J. Schwabauer
 George Seifert
 Stuart A. Seligson
 George H. Senge
 Jihye Sofia Seo
 Freydoon Shahidi
 T. Shintani
 Alexandra Shlapentokh
 Stefan Shrier
 Allan J. Silberger
 William M. Singer
 Dev P. Sinha
 Irina F. Sivergina
 John R. Smart
 Richard A. Smith
 Louis Solomon
 Steven Robert Spencer
 Ram P. Srivastav
 Olaf P. Stackelberg
 Ivar Stakgold
 Peter Stanek
 Lee James Stanley
 Richard P. Stanley
 Russell Lynn Stead
 Clarence F. Stephens
 Glenn H. Stevens
 H. A. Stone
 Lawrence D. Stone
 Garrett James Stuck
 Susquehanna International Group, LLP
 Andrew V. Sutherland
 Margaret W. Taft
 John T. Tate
 B. A. and M. Lynn Taylor
 Jean E. Taylor
 Laurence R. Taylor
 Chuu-Lian Terng
 John Alexander Thacker
 Robert J. Thompson
 John A. Thorpe
 Peter Ungar
 Richard E. Vesley
 David A. Vogan Jr
 Daniel F. Waggoner
 Stephen Wainger
 Justin Clement Walker
 John H. Walter
 Frank W. Warner III

William Edwun Warren
 Greg M. Watson
 David L. Webb
 Greg Wene
 Ellen Westheimer
 James V. Whittaker
 Roger A. and
 Sylvia M. Wiegand
 David Jacob Wildstrom
 Susan Gayle Williams
 Richard E. Williamson
 Heinz Wolfgang Wissner
 Japheth L. M. Wood
 George V. Woodrow III
 Alan C. Woods
 Hung-Hsi Wu
 Zhen Xiang Xiong
 Masayuki Yamasaki
 Catherine Huafei Yan
 Michael Yanowitch
 Ann Yasuhara
 James A. Yorke
 Michel M. Zarka
 David E. Zitarelli

FRIENDS

(Gifts of less than \$100)

Anonymous (241)
 Thuraya Juma Abdulla
 Martha L. Abell
 William P. Abrams
 Colin C. Adams
 Nasir Uddin Ahmed
 Anvarjon Akhatjonovich
 Ahmedov V
 T. M. G. Ahsanullah
 Tadashi Aikou
 Peter Albers
 Roger K. Alexander
 Gerald L. Alexanderson
 John S. Alin
 Alexander Anthony
 Ambrosio
 Vrege Jolfai
 Amirkahanian
 Fredric Davis Ancel
 Victoria Ancona
 Donald W. Anderson
 Joel H. Anderson
 John D. Anderson
 Marlow E. Anderson
 Michael T. Anderson
 Paul Anderson
 Peter P. Andre

Benjamin Andrews
 George E. Andrews
 Philip M. Anselone
 Michael V. Anshelevich
 Peter H. Anspach
 Myla M. Archer
 Thomas E. Armstrong
 Jean-Christophe Aubert
 Bernice L. Auslander
 John J. Avioli
 Joel Avrin
 Scott E. Axelrod
 Elizabeth Ayer
 Christine W. Ayoub
 Sebastian Baader
 Kiyoshi Baba
 Joni E. Baker
 Carlo Bardaro
 Julio Edgardo Barety
 Jose Barros-Neto
 David J. Barsky
 Karl F. Barth
 Alexander Barvinok
 Hyman Bass
 Frances B. Bauer
 Richard A. Baum
 Patricia Bauman
 J. Thomas Beale
 Edward Beckenstein
 William H. Beckmann
 John A. Beekman
 Wolfgang Beekmann
 James C. Beidleman
 sarah-marie belcastro
 Igor Belegradek
 Wolfgang Bell IV
 James W. Benham
 Carlos Benitez
 Sterling K. Berberian
 Steven B. Berger
 George M. Bergman
 Swanhild Bernstein
 Janet A. Best
 James S. Bethel
 Nicholas J. Bezak
 Gautam Bharali
 Marilyn S. Bickel
 Lydia Bieri
 Louis J. Billera
 Martin Billik
 Katalin Bimbo
 Terrence Paul Bisson
 Denis Blackmore
 J. A. Rod Blais
 John D. Blanton
 Don Blasius

David S. Bloom
 James V. Blowers
 Lenore Carol Blum
 Francis Bonahon
 Rupert D. Boswell Jr
 Ward D. Bouwsma
 Mike Boyle
 Tom C. Braden
 Richard C. Bradley
 Steven B. Bradlow
 Alberto Branciari
 Fred Brauer
 John C. Breckenridge
 Kenneth S. Brown
 Robert F. Brown
 Gloria Brown-Brooks
 W. Dale Brownawell
 Andrew M. Bruckner
 Robert R. Bruner
 David C. Brydges
 Joseph T. Buckley
 Daniel Buehler
 Stephen S. Bullock
 Krzysztof Burdzy
 Richard Charles Burge
 Ralph Stevens Butcher
 George M. Butler
 George L. Cain
 L. Lorne Campbell
 Corrado Cardarelli
 Jon F. Carlson
 Robert C. Carlson
 David W. Carter
 Phyllis J. Cassidy
 Seth D. Chaiken
 Gulbank D. Chakerian
 Graham D. Chalmers
 Scott G. Chastain
 Kwan-Wei Chen
 Louis H. Y. Chen
 Nikolai I. Chernov
 William A. Cherry
 Choong Yun Cho
 Chris Christensen
 Demetrios
 Christodoulou
 Philip T. Church
 Philip A. Cobb
 James A. Cochran
 Todd E. Cochrane
 John Coffey
 James Wesley Cogdell
 Amy Cohen
 Frederick R. Cohen
 Donald L. Cohn
 Richard M. Cohn
 George Cole
 Luann Cole
 Kriss L. Coleman
 Daniel Comenetz
 Bruce P. Conrad
 Thomas A. Cootz
 Heinz O. Cordes
 Constantin Corduneanu
 Thomas Carney Corrigan
 James P. Cossey
 Ovidiu Costin
 Malcolm A. Coulter
 Michael D. Covney
 Michael G. Crandall
 Anthony F. Crisafulli
 Donald L. Curlovic
 Albert W. Currier
 Philip C. Curtis Jr
 David B. Damiano
 Jennifer Fowler Daniel
 Ingrid Daubechies
 Chandler Davis
 Donald M. Davis
 Martin D. Davis
 Paul L. Davis
 Edson de Faria
 Luz Maria DeAlba
 Anthony T. Dean
 Ronald W. DeGray
 Percy Alec Deift
 Herbert A. Dekleine
 Aristide Deleanu
 Laura G. DeMarco
 Gleb Denisov
 Robert L. Devaney
 Harold G. Diamond
 Igor Dolgachev
 Robert S. Doran
 Boro Doering
 Jim Douglas Jr
 Ronald G. Douglas
 Karl Heinz Dovermann
 Alex J. Dragt
 Ronald Lewis Drake
 Alexander N.
 Dranishnikov
 Bruce K. Driver
 Thomas L. Drucker
 Steve N. Dulaney
 Patrick Barry Eberlein
 Allan L. Edmonds
 William I. Eggers
 Gertrude Ehrlich
 Stanley Mamour
 Einstein-Matthews
 Samuel Ekong
 G. Griffith Elder
 Nathaniel Eldredge
 Joanne Elliott
 Wade Ellis Jr
 Richard S. Elman
 Hans P. Engler
 Philip G. Engstrom
 John M. Erdman
 Kumar Eswaran
 Carl Faith
 George F. Feeman
 Howard D. Fegan
 Burton I. Fein
 Tadeusz Figiel
 Holland C. Filgo Jr
 Aurino Ribeiro Filho
 David V. Finch
 Benji N. Fisher
 Mary Elizabeth Flahive
 Richard J. Fleming
 Julie A. Fondurulia
 Martin Frankland
 Simon John Fraser
 Michael W. Frazier
 Peter J. Freyd
 Stephen H. Friedberg
 Merwyn M. Friedman
 Karl Hans Frinkle
 Daniel E. Frohardt
 Bent Fuglede



Photo by Sandy Huffaker.

I'm elated...I like that math is fun and there are so many problems to solve... so many interesting concepts. There's so much that it represents...it's a universal art.

—Anton Karpovich, Who Wants to Be a Mathematician regional winner



E. Gebhard Fuhrken
 Hisanori Fujita
 Mark E. Fuller
 Lisl Novak Gaal
 William E. Gabella
 Steven Allen Gabriel
 Jean H. Gallier
 Lars Garding
 Ryan L. Garibaldi
 Howard Garland
 Eberhard G. P. Gerlach
 Murray Gerstenhaber
 Joseph L. Gerver
 Richard M. Gillette
 Anthony A. Gioia
 Anthony J. Giovannitti
 Patricia Giurgescu
 Milton Alfred Glass
 Abraham Goetz
 Robert Gold
 William Mark Goldman
 Daniel A. Goldston
 Boris Ivanovich Golubov
 Jose Luis Gomez Pardo
 Kenneth R. Goodearl
 Roe W. Goodman
 Robert K. Goodrich
 Daniel L. Goroff
 Yasuhiro Goto
 David J. Grabiner
 Sidney W. Graham
 Larry K. Graves
 William Robert Green
 Curtis Greene
 Allan T. Greenleaf
 Frederick P. Greenleaf
 Thomas B. Gregory
 Helmut Groemer
 Leonard Gross
 Edward H. Grossman
 Craig R. Guilbault
 Robert D. Gulliver II
 Gudrun M. Gunnarsdottir
 Bodvarsson
 Wynne Alexander Guy
 Klaus Habetha
 Peter Hagis Jr
 Gerhard E. Hahne
 Andras Hajnal
 R. Stanton Hales Jr
 Brian C. Hall
 James E. Hall
 Timothy Hall
 William F. Hammond
 Heiko Harborth
 Beverly Bailey Hargraves
 Andrew William Harrell
 Fred F. Harrop
 Mikihiko Hayashi
 Leo Hellerman
 Simon Hellerstein
 Rohan Hemasinha
 Robert L. Hemminger
 Francis McVey
 Henderson
 Carsten Hennig
 Thomas Henningsen
 Christopher M. Herald
 Patricia Hersh
 Jan Hertrich-Wolenski
 Joseph Hertzlinger

Georg Hetzer
 Troy L. Hicks
 Gerald N. Hile
 Michael A. Hill
 Shirley A. Hill
 Ronald Hirshon
 Peter David Hislop
 Chungwu Ho
 Arthur M. Hobbs
 Billy F. Hobbs
 Helmut H. W. Hofer
 Michael E. Hoffman
 Tara S. Holm
 Philip John Holmes
 John M. Holte
 Jennifer L. Hopkins
 Jean MacGregor Horn
 V. Dwight House
 Everett W. Howe
 William L. Hoyt
 J. S. Hsia
 Pao-sheng Hsu
 Archibald Perrin Hudgins
 Denise Huet
 Anne Hughes
 Mark E. Huibregtse
 Gustavus E. Huige
 Birge K. Huisgen-
 Zimmermann
 Paul D. Humke
 Livia Hummel
 James E. Humphreys
 Karen C. Hunt
 Walker E. Hunt
 Michael G. Hurley
 Jacques Claude
 Hurtubise
 Pascal Imhof
 Ettore Ferrari Infante
 Ron Irving
 Godfrey L. Isaacs
 Mourad E. H. Ismail
 Noboru Ito
 Yoshifumi Ito
 Eric Robert Jablow
 William Burkley Jacob
 Herve M. Jacquet
 David M. James
 James Jantosciak
 Trevor M. Jarvis
 Francisco J. Jauffred
 George A. Jennings
 David J. John
 Trygve Johnsen
 Bradford W. Johnson
 Charles N. Johnson
 D. Randolph Johnson
 David L. Johnson
 Donald G. Johnson
 Kenneth David Johnson
 Norman W. Johnson
 Theodore D. Johnson
 Eleanor Green Jones
 James P. Jones
 Virginia V. Jory
 Winfried Just
 James H. Justice
 Henry Price Kagey
 Jeffrey N. Kahn
 Stanley Kaplan
 Julian R. Karelitz

Johan Karlsson
 Martin D. Kassabov
 Victor J. Katz
 Louis H. Kauffman
 John P. Kavanagh
 Thomas W. Keller
 Edward L. Keller
 Wayne G. Kellner
 John T. Kemper
 John F. Kennison
 Dmitry Khavinson
 Michael K. H. Kiessling
 L. Richardson King
 Wilfred M. Kincaid
 Ellen E. Kirkman
 John O. Kirley
 Jan Kisynski
 Peter H. Kleban
 Donald E. Knuth
 Robert T. Kocembo Jr. and
 Wendy E. Zielinski
 Richard M. Koch
 Alfred Koestner
 Yoshiharu Kohayakawa
 R. J. Kolesar
 Hiroaki Komatsu
 Eric J. Kostelich
 Adnah G. Kostenbauder
 Manfred Kotter
 Jurg Kramer
 Rick Kreminski
 Gary R. Krumpholz
 Wei-Eihn Kuan
 Rama V. Kunapuli
 Robert P. Kurshan
 Jacques Lafontaine
 Richard B. Lakein
 John Patrick Lambert
 Peter S. Landweber
 Leo J. Lange
 Joseph A. Langsam
 David C. Lantz
 Peter A. Lappan Jr
 Lawrence J. Lardy
 Mark Lares
 Henry B. Laufer
 Raphael Alexander
 Laufer
 Lorraine D. Lavallee
 H. Blaine Lawson Jr
 Walter R. Lawson
 Robert K. Lazarsfeld
 James W. Lea Jr.
 Gun-Won Lee
 John M. Lee
 Ke-Seung Lee
 Kotik K. Lee
 T. H. Lenagan
 Henry S. Leonard Jr
 James I. Lepowsky
 Steven C. Leth
 Bernard W. Levinger
 Michael David Levy
 Tracy E. Lewerenz
 Roger T. Lewis
 Frederick W. Leysieffer
 Yanyan Li
 Jaung Liang
 Stephen Lichtenbaum
 Craig Mason Liddell
 Elliott H. Lieb



The society in which we live today is fundamentally connected with the advancement of scientific research, and your support for those who will further scientific research is greatly appreciated.

—Bertrand Stone, Participant at the Research Science Institute, an Epsilon grant-funded program

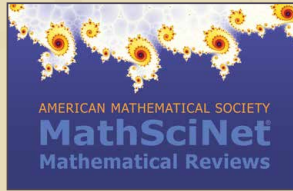
Shen Lin
 Peter A. Linnell
 Robert D. Little
 Ming Chit Liu
 Tsai-Sheng Liu
 Paul Graf Loewner
 George W. Lofquist
 Walter L. Lok
 Charles J. Lombardo
 James Henry Long
 John M. Long
 William C. Lordan
 D. Russell Luke
 Leo Lutchansky Jr
 Norman Y. Lutterodt
 Clement H. Lutterodt
 Michael C. Mackey
 Richard B. Magruder
 Mehran Mahdavi
 Peter Malcolmson
 Joseph Malkevitch
 David M. Malon
 Kenneth L. Manders
 Alfred P. Maneki
 Pauline Mann-Nachbar
 Jason Fox Manning
 Stefano Marchiafava
 Eugene A. Margerum
 David E. Marker
 Charles D. Marshall
 David Imler Marshall
 Jeremy L. Martin
 Nathaniel F. G. Martin
 Ernesto Martinez
 Jerold C. Mathews
 Donald E. Maurer
 John Patterson Mayberry
 James G. McLaughlin
 William G. McCallum
 Gregory L. McColm
 Robert M. McConnell
 Robert A. McCoy
 William D. McIntosh
 Robert W. McKelvey
 George Joseph McNinch
 Robert C. McOwen
 Alberto Medina
 David Meier

Raymond Mejia
 Louis C. Mello
 William Wyatt Menasco
 Govind Menon
 Bruce Mericle
 Jorma K. Merikoski
 Augusto Micheletti
 Marvin V. Mielke
 Jack M. Miller
 Michael J. Miller
 Patrick D. Miller
 Russell G. Miller
 Thomas Len Miller
 William David Miller
 Kenneth C. Millett
 C. David Minda
 Norman D. Mirsky
 Guido Mislin
 Charles W. Misner
 Shashanka S. Mitra
 Joseph Mittleenthal
 Richard W. Montgomery
 Barbara B. Moore
 Hal G. Moore
 Alberto Cezar Moreira
 Joseph G. Moser
 Thomas W. Mullikin
 Albert A. Mullin
 James R. Munkres
 Alexander Nagel
 Kuniaki Nakamitsu
 Kanji Namba
 Joseph Neggars
 Csaba Nemethi
 Siu-Hung Ng
 Liviu I. Nicolaescu
 Lance W. Nielsen
 Gerhard Niklasch
 Paul J. Nikolai
 Tsunekazu Nishinaka
 Togo Nishiura
 Zbigniew H. Nitecki
 Rutger Noot
 Hajimu Ogawa
 Paul D. Olson
 Yoshitsugu Oono
 Edward T. Ordman
 Peter P. Orlik



*MathSciNet
permits math-
ematicians
of developing
countries to
be informed at every moment of recent
developments in the different fields of
mathematics.*

*—Jean-Baptiste Patenou, University of
Dschang, Cameroon, an MDC-funded
institution*



Mikhail Ostrovskii
James C. Owings Jr
Isaac Owusu-Mensah
Judith A. Packer
Felipe M. Pait
Jingyal Pak
Victor P. Palamodov
Bruce P. Palka
Diethard Ernst
Pallaschke
Otway O. M. Pardee
Kyoo-Hong Park
Elwood G. Parker
Thomas H. Parker
Alberto Parmeggiani
Bozena Pasik-Duncan
Donald A. Patterson
Walter M. Patterson III
James M. Peek
Stephen Pennell
John W. Pennisten
Juan C. Peral
Peter Perkins
Serge Perrine
Charles Samuel Peskin
Troels Petersen
Jonathan Pila
Anand Pillay
Steven Pincus
Harriet S. Pollatsek
Florian Pop
Lucio M-G Prado
Stanley Preiser
Gordon B. Preston
Jozef Henryk Przytycki
Eric L. Pugh
Philip Quartararo Jr
Michael F. Quinn
Cary Baker Rader
Louis B. Rall
Dinakar Ramakrishnan
Melapalayam S.
Ramanujan
R. Michael Range
M. M. Rao
Wayne Mark Raskind
S. W. Rayment
Frank Raymond
Christopher L. Reedy
Ernestine Reeves-Hicks

Eugenio Regazzini
Michael Renardy
Michael Bela Revesz
Robert J. Reynolds
Charles W. Rezk
Martin G. Ribe
Richard S. Rich
Norman J. Richert
Robert D. Rigdon
Timothy Rupert Riley
Jose Rio
Thomas W. Rishel
Frederic Robert
Joel B. Roberts
Joseph B. Roberts
Derek J. S. Robinson
Norai R. Rocco
David E. Rohrlich
Judith Roitman
Guillermo Romero
Melendez
Rodolfo Ruben Rosales
Nicholas J. Rose
Michael I. Rosen
Kenneth A. Ross
Hugo Rossi
Christel Rotthaus
Cecil C. Rousseau
Virginia G. Rovnyak
James Samuel Royer
Joachim H. Rubinstein
Robert S. Rumely
Hansklau Rummmler
Cihan K. Saclioglu
Seok Sagong
Toshio Sakata
Hector N. Salas
Thomas S. Salisbury
G. Thomas Sallee
Laurent Saloff-Coste
Gary Sampson
Robert W. Sanders
Mamour Sankhe
Jose Cloves Verde
Saraiva
Hiroki Sato
Stanley A. Sawyer
Karen Saxe
Juan Jorge Schaffer
Doris W. Schattschneider

Gideon Schechtman
John F. Schmeelk
Dieter S. Schmidt
Maria Elena Schonbek
Fred B. Schultheis
Alan Schumitzky
Charles Freund Schwartz
Gerald W. Schwarz
Laurence Britt
Schweitzer
Stanley L. Sclove
Warner Henry Harvey
Scott III
Christoph J. Scriba
Anthony Karel Seda
Jan Segert
George B. Seligman
Peter H. Sellers
Mohamed W. I. Sesay
Richard J. Shaker
John C. Shepherdson
Kenichi Shiraawa
Donald R. Short Jr
Vladimir Shpilrain
Steven E. Shreve
Stuart J. Sidney
Christopher Patrick Silva
Daniel S. Silver
Anastasios Simalarides
Patrick J. Sime
David B. Singmaster
Walter S. Sizer
Christopher Skinner
Colin Smith
Wilbur L. Smith
Joel A. Smoller
Timothy Law Snyder
Garret E. Sobczyk
Bruce Michael Solomon
Boris Solomyak
Linda R. Sons
Michael J. Sormani
Stephen E. Spielberg
John J. Spitzer
David A. Sprecher
David H. Spring
Ross E. Staffeldt
Friedemann W.
Stallmann
William L. Stamey
Dennis W. Stanton
Edmund Beauclerc
Staples III
Christopher W. Stark
Dudley S. Stark
Sherman K. Stein
Charles I. Steinhorn
John G. Stevens
T. Christine Stevens
Ian Stewart
John Colin Stillwell
John R. Stock
Paul K. Stockmeyer
Harold J. Stolberg
Ontario Stotts
Emil J. Straube
Walter A. Strauss
Volker Strehl
Gerhard O. Strohmmer
Richard W. Sullivan
Kelly John Suman

Hector J. Sussmann
William J. Sweeney
Roman Sznajder
Lajos F. Takacs
Richard B. Talmadge
Yoshihiro Tanaka
Elliot A. Tanis
Leon H. Tatevossian
Keith A. Taylor
Roger Temam
Edward C. Thoele
Edward G. Thurber
Pham Huu Tiep
Maleafisha Stephen
Joseph Tladi
Craig A. Tracy
Charles R. Traina
Selden Y. Trimble V
Jan Trlifaj
Spiros Peter Tsatsanis
Kazo Tsuji
Kouzou Tsukiyama
Joann Stephanie Turisco
Thomas Francis Tyler
Johan Tysk
Jeremy Taylor Tyson
James L. Ulrich
Harald Upmeier
Johannes A. Van
Casteren
H. N. Van Eck
Aernout C. D. Van Enter
Jan Van Neerven
Charles L. Vanden
Eynnden
Juan L. Vazquez
Jean-Eudes Villeneuve
Marie A. Vitulli
Michael Voichick
Dan-Virgil Voiculescu
Paul S. Voigt
Paul A. Vojta
Yury Volin
Hans W. Volkmer
William M. Wagner
Jonathan M. Wahl
Charles Waiveris
David B. Wales
David A. R. Wallace

John Thomas Walsh
Frederick Walters
Hans Ulrich Walther
Seth L. Warner
Robert L. Warnock
Michiaki Watanabe
Shoji Watanabe
David S. Watkins
Mark E. Watkins
Cary H. Webb
Glenn F. Webb
Hans F. Weinberger
Michael I. Weinstein
Lloyd R. Welch
Chris M. Wendl
Henry C. Wente
John E. Wetzell
Robert L. Wheeler
Brian Cabell White
Charles M. White
Brian D. Wick
Steven V. Wilkinson
Robert L. Wilson Jr
Robert Lee Wilson
Troy Winfree
F. Wintrobe
Bettina Wiskott
Thomas P. Witeliski
Louis Witten
Arthur Wouk
Bostwick F. Wyman
Paul C. Yang
Fawzi M. Yaqub
Mitsuru Yasuhara
Suresh Yegnashankaran
Mei Yin
J. Michael Yohe
Takeo Yokonuma
Donald F. Young
Noriko Yui
Charles T. Zahn
Francois Zaza
Thomas Zaslavsky
Steven M. Zucker
John A. Zweibel
Paul F. Zweifel



*The support of the AMS...has helped us in
obtaining other sponsors through a cascade
effect.*

*—Luis Caceres Duque, Director of PROTaSM,
an Epsilon grant-funded program*



2014 Officers:

President: David A. Vogan, Jr., *Massachusetts Institute of Technology*

President Elect: Robert L. Bryant, *Duke University*

Vice Presidents: Andrew M. Odlyzko, *University of Minnesota*
Susan Montgomery, *University of Southern California*
Christoph M. Thiele, *University of Bonn*

Associate Secretaries: Georgia Benkart, *University of Wisconsin, Madison*
Brian D. Boe, *University of Georgia*
Michel L. Lapidus, *University of California, Riverside*
Steven H. Weintraub, *Lehigh University*

Treasurer: Jane M. Hawkins, *University of North Carolina, Chapel Hill*

Associate Treasurer: Zbigniew H. Nitecki, *Tufts University*

2014 Board of Trustees:

Ruth M. Charney, *Brandeis University*
Mark L. Green, *University of California, Los Angeles*
Jane M. Hawkins, *University of North Carolina, Chapel Hill* (ex officio)
William H. Jaco, *Oklahoma State University*
Robert K. Lazarsfeld, *Stony Brook University*
Zbigniew H. Nitecki, *Tufts University* (ex officio)
David A. Vogan, Jr., *Massachusetts Institute of Technology* (ex officio)
Karen Vogtmann, *Cornell University*

2014 Council:

Dan Abramovich, <i>Brown University</i>	Tara S. Holm, <i>Cornell University</i>
Alejandro Adem, <i>University of British Columbia</i>	Michel L. Lapidus, <i>University of California, Riverside</i>
Hélène Barcelo, <i>Mathematical Sciences Research Institute</i>	Michael J. Larsen, <i>Indiana University</i>
Arthur T. Benjamin, <i>Harvey Mudd College</i>	Kristin E. Lauter, <i>Microsoft Research</i>
Georgia Benkart, <i>University of Wisconsin, Madison</i>	Susan Montgomery, <i>University of Southern California</i>
Brian D. Boe, <i>University of Georgia</i>	Zbigniew H. Nitecki, <i>Tufts University</i>
Susanne C. Brenner, <i>Louisiana State University</i>	Andrew M. Odlyzko, <i>University of Minnesota</i>
Robert L. Bryant, <i>Duke University</i>	Ken Ono, <i>Emory University</i>
James Carlson, <i>Clay Mathematics Institute</i>	Natasa Pavlovic, <i>University of Texas, Austin</i>
Ralph L. Cohen, <i>Stanford University</i>	Victoria Powers, <i>Emory University</i>
Robert J. Daverman, <i>University of Tennessee, Knoxville</i>	Amber L. Puha, <i>California State University, San Marcos</i>
Jesus A. DeLoera, <i>University of California, Davis</i>	Kenneth A. Ribet, <i>University of California, Berkeley</i>
Richard T. Durrett, <i>Duke University</i>	Peter Sarnak, <i>Princeton University</i>
Lisa J. Fauci, <i>Tulane University</i>	Carla D. Savage, <i>North Carolina State University</i>
Sergey V. Fomin, <i>University of Michigan</i>	Ronald M. Solomon, <i>Ohio State University</i>
Susan J. Friedlander, <i>University of Southern California</i>	Jennifer Taback, <i>Bowdoin College</i>
Allan Greenleaf, <i>University of Rochester</i>	Christoph M. Thiele, <i>University of Bonn</i>
Jane M. Hawkins, <i>University of North Carolina, Chapel Hill</i>	David A. Vogan, Jr., <i>Massachusetts Institute of Technology</i>
	Steven H. Weintraub, <i>Lehigh University</i>

Your charitable gift to the AMS in 2013:

THANK YOU FOR YOUR GENEROSITY

MATHSCINET® FOR DEVELOPING COUNTRIES
Endowment for Prizes & Awards
AREA OF GREATEST NEED
Student Chapters
EPSILON FUND



Scholars from the University of Douala in Cameroon, an MDC-supported university



Photo courtesy of PROMYS



“Doing mathematics depends on connections like Paul Sally and like Carla Savage—on people whom you’ve known most of your life, and on people you just met whom you’re going to know for most of your life. The AMS has always been about building and supporting those connections. That happens in ways like the annual Meetings that are 120 years old, in Mathematics Research Communities that are six years old, and in Student Chapters that are just starting.” – David A. Vogan, Jr., President

CONTACT THE AMS

Providence

201 Charles Street, Providence, Rhode Island 02904-2294 USA;
Tel: 401-455-4000; Fax: 401-331-3842;
Email (AMS general inquiries): ams@ams.org
AMS Website: www.ams.org • webmaster@ams.org
Acquisitions Editors, Publication Program:
www.ams.org/book-series • acquisitions@ams.org
Author Tools: www.ams.org/authors • tech-support@ams.org
Professional Programs: www.ams.org/programs • prof-serv@ams.org
Customer Services: www.ams.org/customers • cust-serv@ams.org
Data on the Profession: www.ams.org/annual-survey • ams-survey@ams.org
Development: www.ams.org/support • development@ams.org
Employment Services: www.ams.org/employment • emp-info@ams.org
MathSciNet: www.ams.org/mathscinet • msn-support@ams.org
Meetings: www.ams.org/meetings • meet@ams.org
Membership: www.ams.org/membership • amsmem@ams.org
Prizes & Awards: www.ams.org/prizes-awards • ams@ams.org
Public Awareness Office: www.ams.org/public-awareness • paoffice@ams.org
Publications/Product Information: www.ams.org/bookstore • bookstore@ams.org

Ann Arbor

**(MathSciNet®, Mathematical Reviews
Editorial Office)**

416 Fourth Street, Ann Arbor, Michigan 48103-4820
USA; Tel: 734-996-5250;
Fax: 734-996-2916;
Email: mathrev@ams.org • www.ams.org/mr-database

Washington, DC

(Government Relations, Science Policy)

1527 Eighteenth Street, N.W., Washington, DC
20036-1358 USA; Tel: 202-588-1100;
Fax: 202-588-1853;
Email: amsdc@ams.org • www.ams.org/government

www.ams.org

Connecting with the AMS



www.ams.org/about-us/social